



FC CE RoHS [warranty 5 years]



ITEM CODE	FLXC-025
OUTPUT	RF 2.4Ghz DMX512
OPERATING TEMP.	-10°C ~ +55°C

Product features

Adopt wireless RF and wired DMX512 protocol 2 in 1 control mode, more flexible and convenient for project installation.

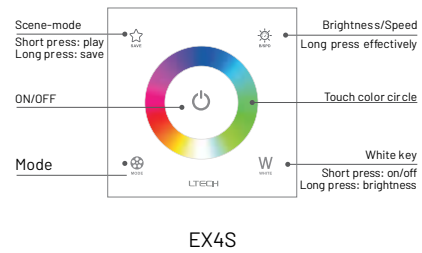
Advanced RF wireless sync/zone control technology, make sure dynamic color modes synchronously among multiple drivers.

Install touch panel at different areas, can control the same LED light, achieve multi-panel control, no quantity limited.

Touch keys with chord and LED indicator.

Adopts capacitive touch control technology makes LED dimming selection more user-friendly.

Compatible with remote and APP control with adding LTECH gateway.



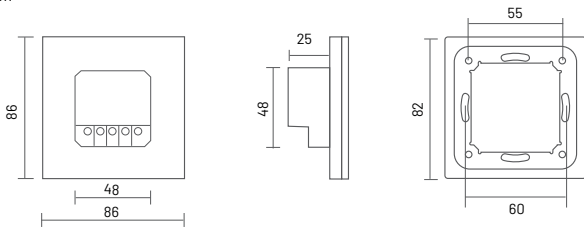
- Mode**
1. Static red
 2. Static green
 3. Static blue
 4. Static yellow
 5. Static purple
 6. Static cyan
 7. Static white
 8. RGB jumping
 9. 7 Colors jumping
 10. RGB color smooth
 11. Full-color smooth
 12. Static black (only close RGB)

* White light only: press key to choose black mode, then press W key.

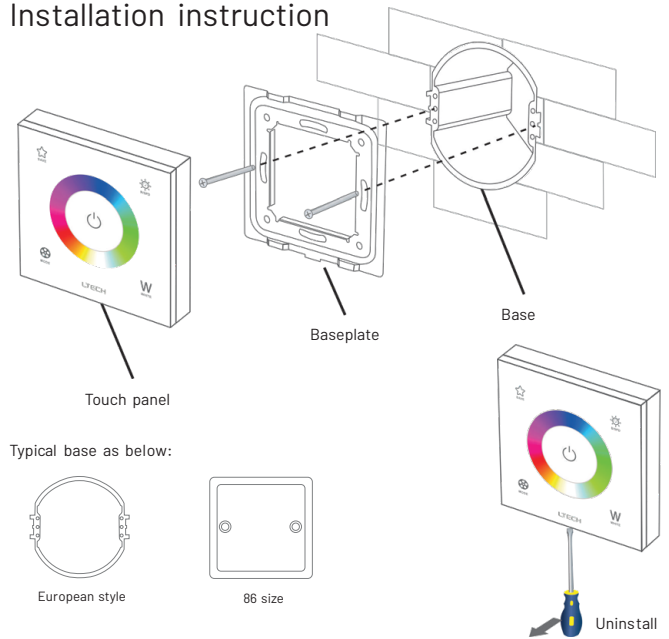
EX4S

Product size

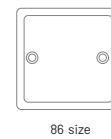
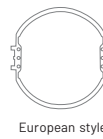
Unit: mm



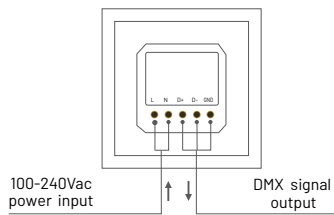
Installation instruction



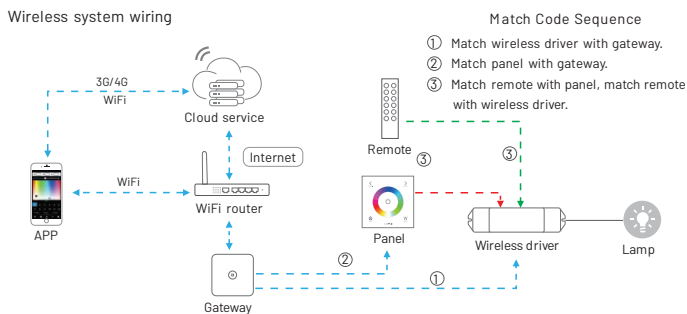
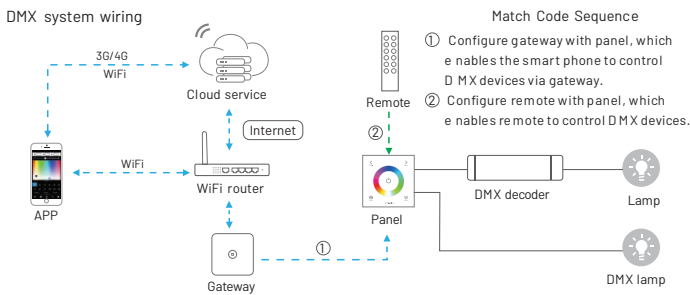
Typical base as below:



Terminals



Match code sequence



Application composition

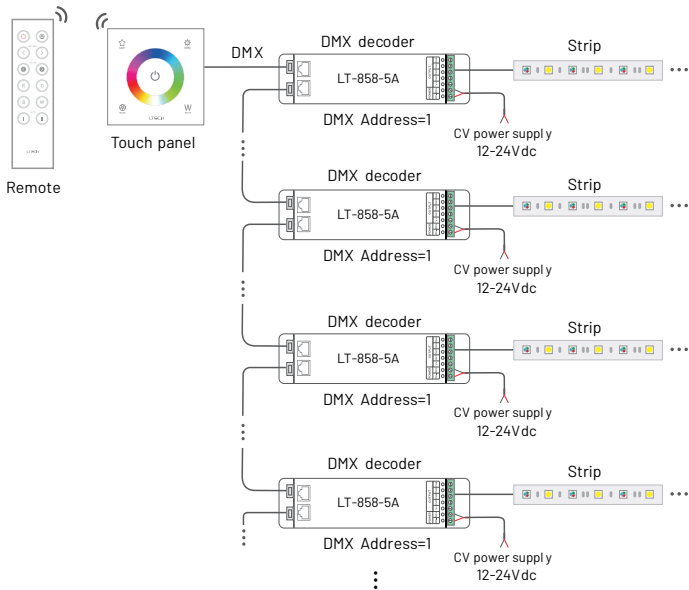
DMX512 control

1. Touch panel + DMX driver + Lamp
2. Remote + Touch panel + DMX driver + Lamp
3. WiFi master controller + Touch panel + DMX driver + Lamp
4. WiFi master controller + Remote + Touch panel + DMX driver + Lamp

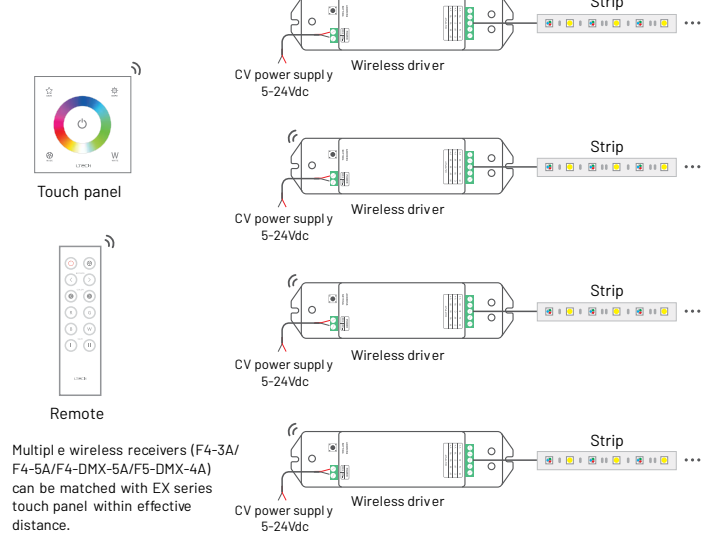
Wireless control

1. Touch panel + Wireless driver + Lamp
2. Remote + Touch panel + Wireless driver + Lamp
3. WiFi master controller + Touch panel + Wireless driver + Lamp
4. WiFi master controller + Remote + Touch panel + Wireless driver + Lamp

DMX wiring

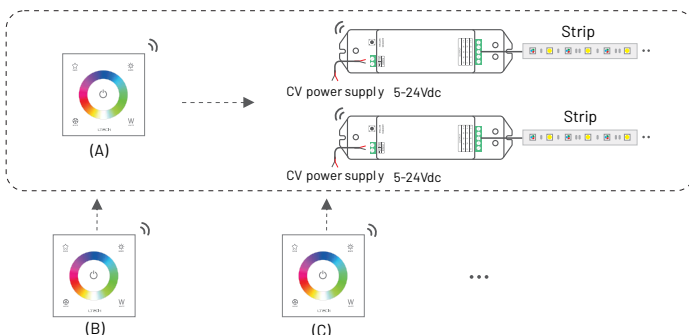


RF wireless wiring



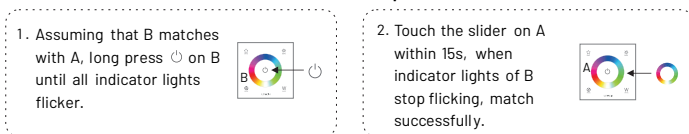
To avoid the signal interference, the installation needs to keep away from the large area metal material or the metal material space.

Multi-panel control wiring

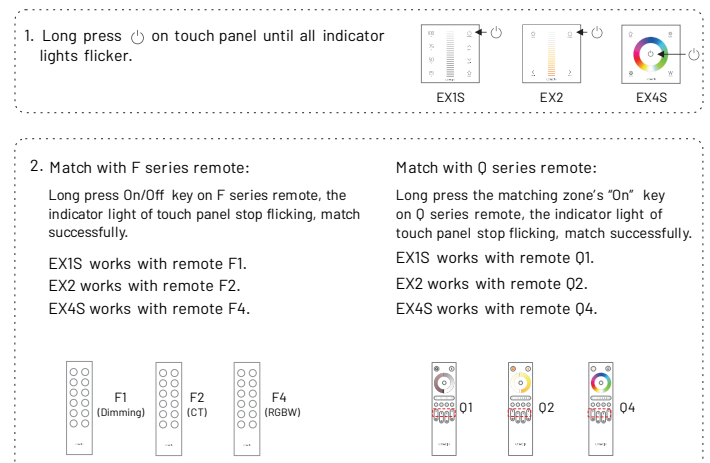


- * After touch panel A realizes controlling the lamps, if B and C are matched with A, they can also control the lamps.
- * Linkage control is also available at connecting with DMX decoders.

Match code between touch panels



Match code between touch panel & remote

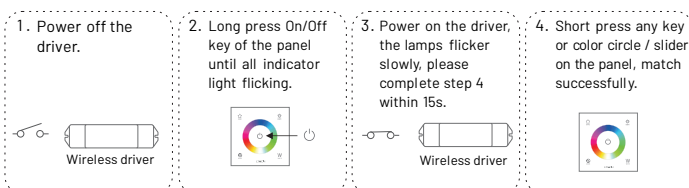


* Please match/clear code when indicator light of panel is white.

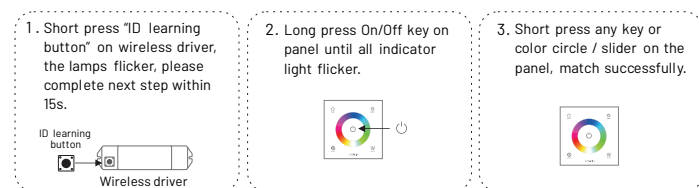
Match code between touch panel & wireless driver

Touch panels can work with wireless driver F4-3A/F4-5A/F4-DMX-5A/F5-DMX-4A.

Method 1:

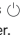



Method 2:

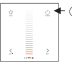



* Please match/clear code when indicator light of panel is white.

Match code between touch panel & gateway


1. Long press  on touch panel until indicator lights flicker.


EX1S


EX2

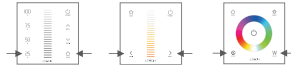

EX4S


2. Turn on APP, enter "zone set" interface, click the right top "MATCH" key, then follow the prompts.



Clear code

Press the bottom two key on touch panel simultaneously for 6s, the indicator lights flicker several times, clear code successfully.



* Please match/clear code when  indicator light of panel is white.

Warranty agreement

1. We provide lifelong technical assistance with this product:
 - A 5-year warranty is given from the date of purchase. The warranty is for free repair or replacement if cover manufacturing faults only.
 - For faults beyond the 5-year warranty, we reserve the right to charge for time and parts.
2. Warranty exclusions below:
 - Any man-made damages caused from improper operation, or connecting to excess voltage and overloading.
 - The product appears to have excessive physical damage.
 - Damage due to natural disasters and force majeure.
 - Warranty label, fragile label and unique barcode label have been damaged.
 - The product has been replaced by a brand new product.
3. Repair or replacement as provided under this warranty is the exclusive remedy to the customer. LTECH shall not be liable for any incidental or consequential damages for breach of any stipulation in this warranty.
4. Any amendment or adjustment to this warranty must be approved in writing by LTECH only.